

# QUEENSBURY ASCT STUDY

## Cluster 1

### AM Peak Hour

**17mph**  
Average Travel Speed

**18mph**  
Average Travel Speed with Coordinated System

**19mph**  
Average Travel Speed with ASCT

**5,921**  
Total Stops

**5,156**  
Total Stops with Coordinated System

**4,900**  
Total Stops with ASCT

**62.3hrs**  
Vehicle Hours of Delay

**50.7hrs**  
Vehicle Hours of Delay with Coordinated System

**46.3hrs**  
Vehicle Hours of Delay with ASCT

### PM Peak Hour

**13mph**  
Average Travel Speed

**15mph**  
Average Travel Speed with Coordinated System

**16mph**  
Average Travel Speed with ASCT

**10,141**  
Total Stops

**9,151**  
Total Stops with Coordinated System

**8,879**  
Total Stops with ASCT

**143.7hrs**  
Vehicle Hours of Delay

**113.4hrs**  
Vehicle Hours of Delay with Coordinated System

**106.2hrs**  
Vehicle Hours of Delay with ASCT

### Saturday Peak Hour

**13mph**  
Average Travel Speed

**15mph**  
Average Travel Speed with Coordinated System

**15mph**  
Average Travel Speed with ASCT

**10,423**  
Total Stops

**8,915**  
Total Stops with Coordinated System

**8,904**  
Total Stops with ASCT

**147.5hrs**  
Vehicle Hours of Delay

**107.5hrs**  
Vehicle Hours of Delay with Coordinated System

**111.5hrs**  
Vehicle Hours of Delay with ASCT

## Travel Time Results

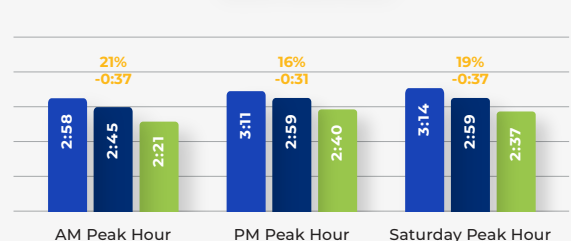
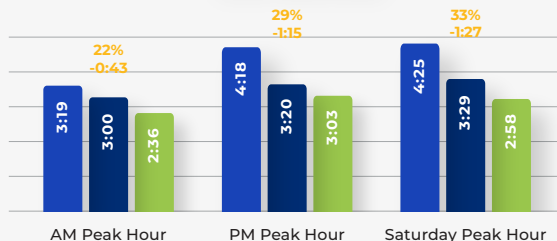
### EASTBOUND

### WESTBOUND

Existing ●

Coordinated ●

ASCT ●



# QUEENSBURY ASCT STUDY

## Cluster 2

### PM Peak Hour

**19mph**  
Average Travel Speed

**19mph**  
Average Travel Speed  
with Coordinated System

**20mph**  
Average Travel Speed with ASCT

**7,119**  
Total Stops

**6,362**  
Total Stops with  
Coordinated System

**6,356**  
Total Stops with ASCT

**79.3hrs**  
Vehicle Hours of Delay

**81.6hrs**  
Vehicle Hours of Delay  
with Coordinated System

**74.8hrs**  
Vehicle Hours of Delay with ASCT

### Saturday Peak Hour

**20mph**  
Average Travel Speed

**21mph**  
Average Travel Speed  
with Coordinated System

**21mph**  
Average Travel Speed with ASCT

**6,447**  
Total Stops

**5,067**  
Total Stops with  
Coordinated System

**5,496**  
Total Stops with ASCT

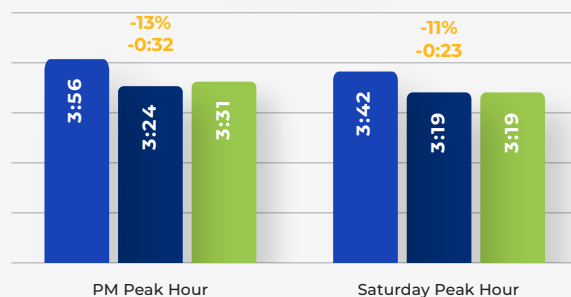
**68.8hrs**  
Vehicle Hours of Delay

**62.6hrs**  
Vehicle Hours of Delay  
with Coordinated System

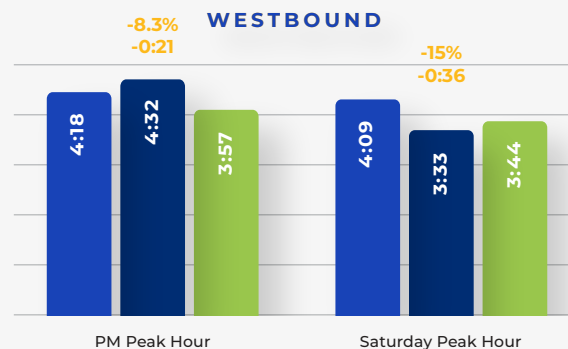
**61.9hrs**  
Vehicle Hours of Delay with ASCT

### Travel Time Results

#### EASTBOUND



#### WESTBOUND



- Existing
- Coordinated
- ASCT

# QUEENSBURY ASCT STUDY

## Cluster 3

PM Peak Hour

**14mph**

Average Travel Speed

**15mph**

Average Travel Speed  
with Coordinated System

**14mph**

Average Travel Speed with ASCT

**4,151**

Total Stops

**4,053**

Total Stops with  
Coordinated System

**4,150**

Total Stops with ASCT

**56.6hrs**

Vehicle Hours of Delay

**50.7hrs**

Vehicle Hours of Delay  
with Coordinated System

**47.5hrs**

Vehicle Hours of Delay with ASCT

## Travel Time Results

EASTBOUND

WESTBOUND

